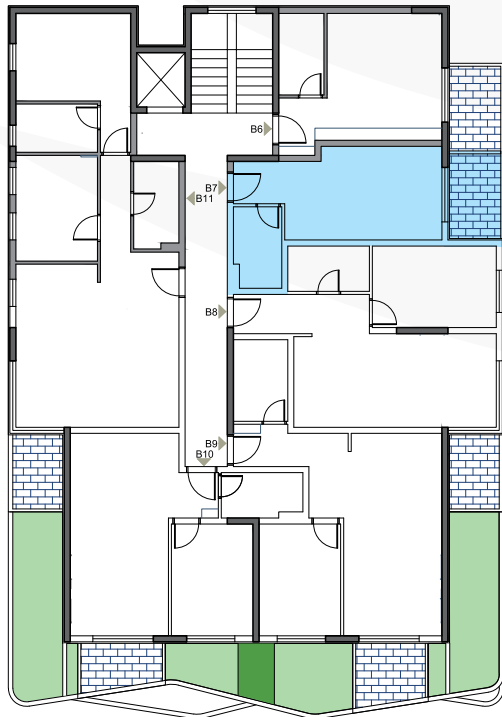


<b>STAN B7</b>	1	Ulazni hodnik	2.38 m <sup>2</sup>
	2	Kupatilo	4.16 m <sup>2</sup>
	3	Dnevna soba i kuhinja	15.52 m <sup>2</sup>
	4	Terasa	4.00 m <sup>2</sup>
	Neto površina stana		26.06 m <sup>2</sup>



**ULAZ** →

